

ORIENTAL PRATINCOLE
REPORT NO. 6
Grace Maglio

SUN, SHE and SEC are now in Cambodia with up to 160km between them. SHE and SUN are both in the Tonle Sap Biosphere Reserve, with SEC remaining in the Prey Veng Province. SEP has made a big move to India.

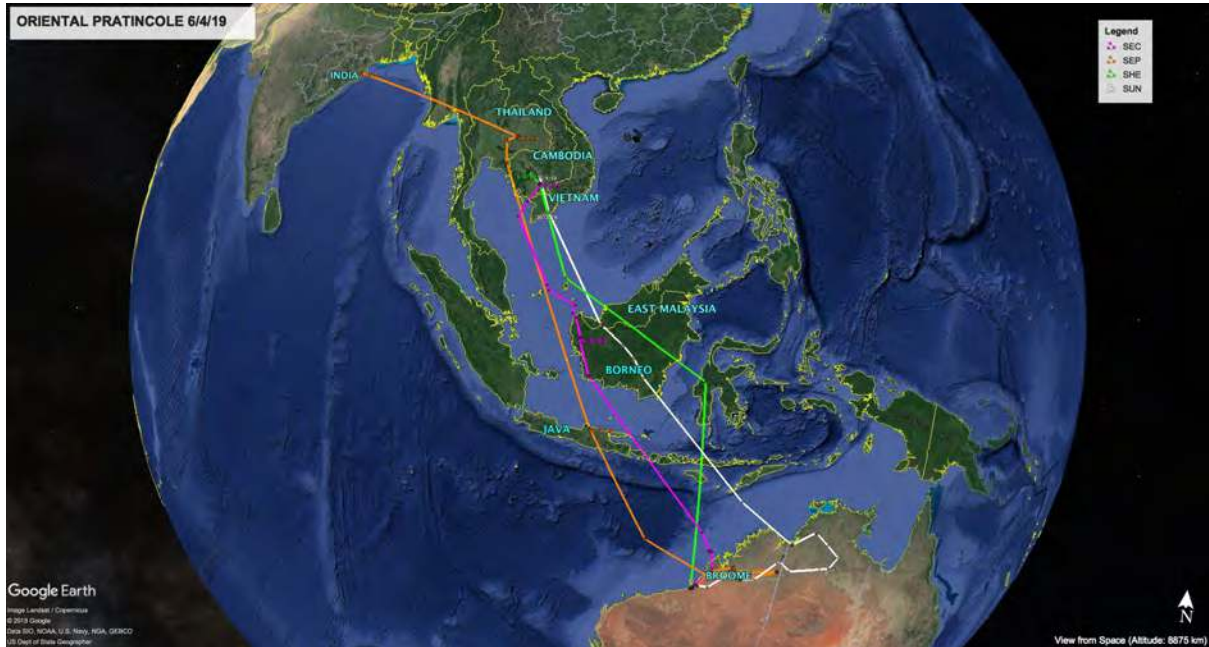


Figure 1 – Tracks of four Oriental Pratincole, 8th February to 6th April 2019.

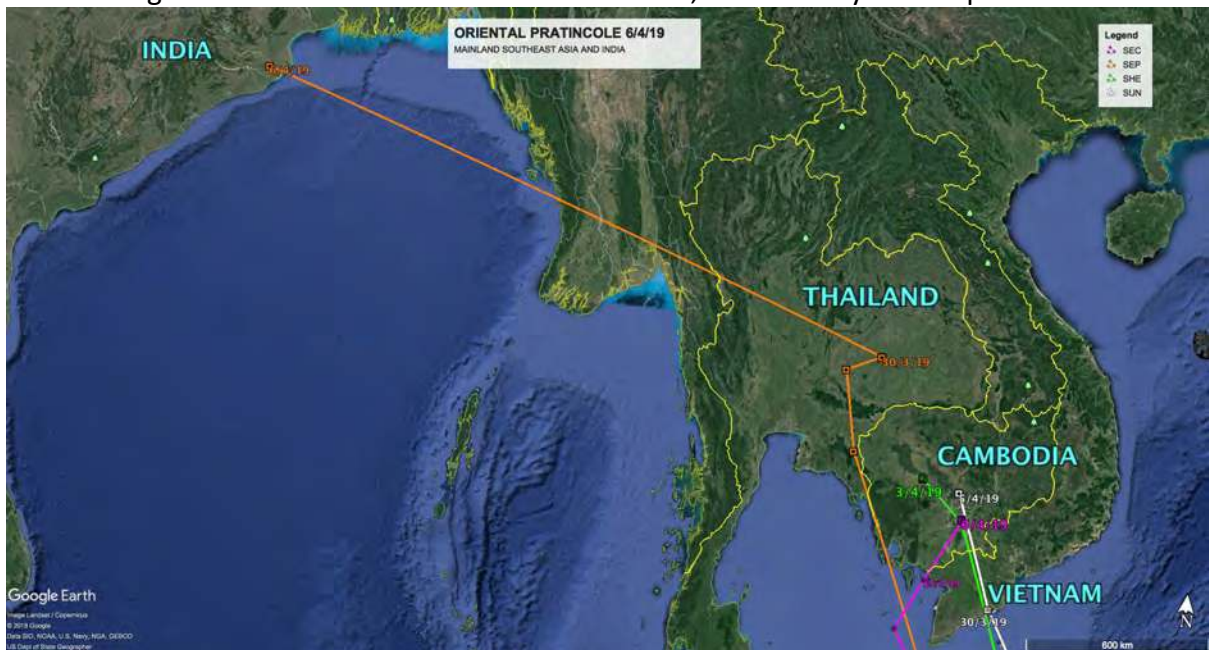


Figure 2 – Oriental Pratincole, Mainland Southeast Asia locations and East India.

DISTANCE FROM RELEASE LOCATION 30/3/19

Leg Flag ID	Distance from 80 Mile Beach release location (approx.)
SUN	3930km
SEP	5800km
SHE	4000km
SEC	3840km

SUN (PTT 83591) – Where there’s water...

On the 30th March SUN was in the Mekong River Delta region of Vietnam. Data received on the 5th April indicates SUN is now located another 340km north in the southern area of the Kampong Thom Province in the Baray District of Cambodia, 90km north of Phnom Penh. The Kampong Thom Province is the second largest province in Cambodia, within the Tonle Sap Biosphere Reserve, where rice paddies and aquaculture dominate the landscape. SUN is 100km east of SHEs western Tonle Sap location of the past six weeks. SUN is approximately 3930km from the 80 Mile Beach release site in North West Australia.

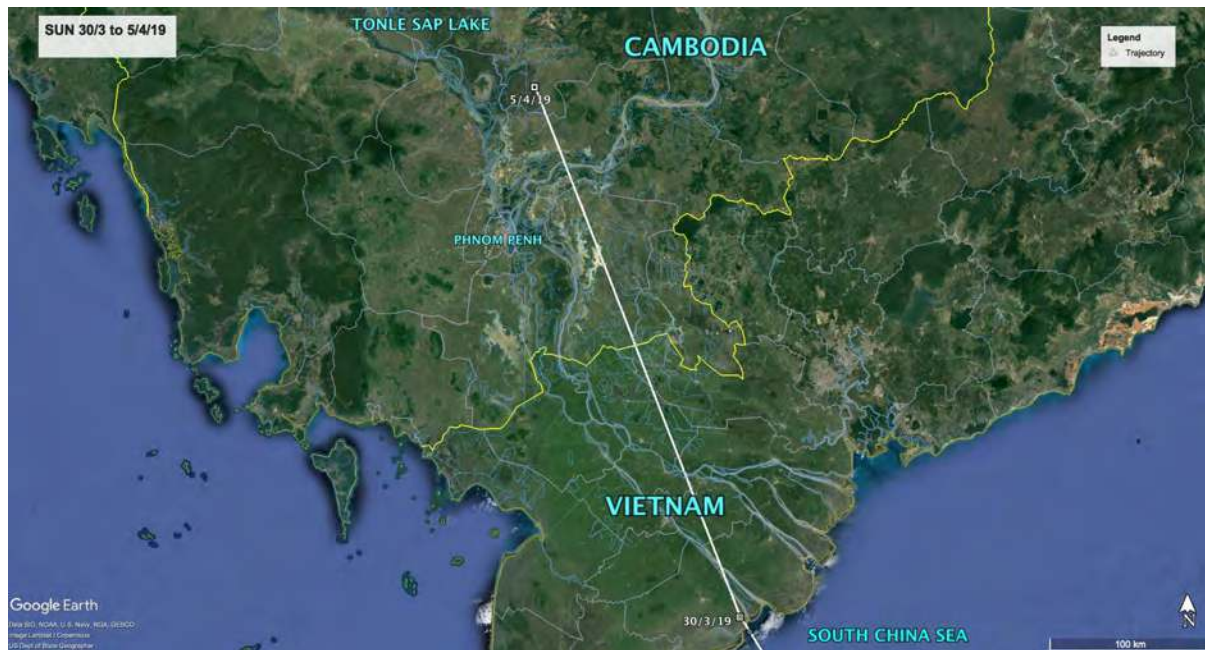


Figure 3 – SUN, Mekong River Delta Region, Vietnam to Kampong Tong Province, Cambodia.

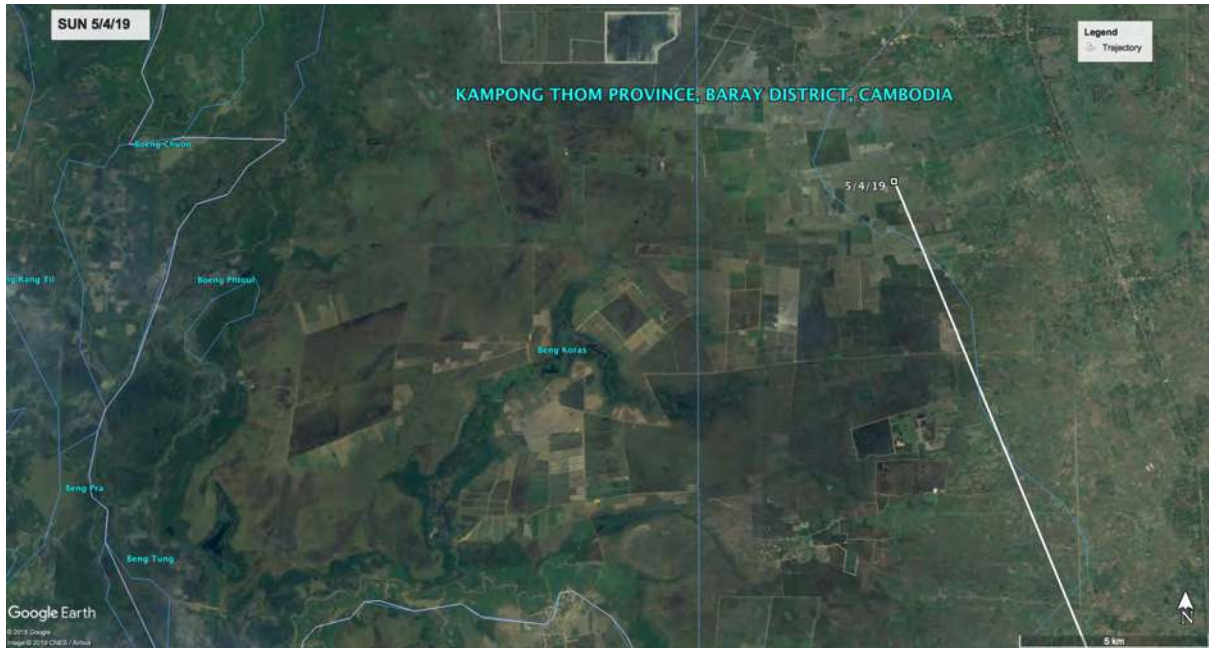


Figure 4 – SUN, Kampong Thom Province, Cambodia

SEP (PTT 83593) –From the coastal plains of North West Australia to the coastal plains of East India.

From the 22nd March SEP was located in the Nakhon Ratchasima Province, Thailand. Around the 1st April SEP left Mainland Southeast Asia and flew towards India. The latest data from the 6th April finds SEP in the coastal plains of Odisha, a state in East India approximately 1815km north west of its Thailand location. Unlike the remote and isolated coastal plains of Eighty Mile Beach, the District of Kendrapara, where SEP is currently located, consists of predominately agricultural allotments (legumes, rice and jute), with many small villages nearby. However a similarity does exist in the frequent weather events, including cyclones, flood and drought that occur in both regions. Sep is currently 5800km from the 80 Mile Beach release site.



Figure 5 – SEP, track from Thailand to India



Figure 6 – SEP, in agricultural land of Kendrapara District. Note the many surrounding villages.

SHE (PTT 83595) - **To breed or not to breed.** – For the past six weeks SHE continues to inhabit the Tonle Sap Biosphere Reserve, Cambodia. It is difficult to judge whether SHEs movements in this area are an indication of potential breeding/nesting behaviour or normal foraging/roosting behaviour. We are left to wait and wonder for another week.



Figure 7 - SHE Tonle Sap Lake Biosphere Reserve

