

ORIENTAL PRATINCOLE

REPORT NO. 19

25/10/19

Grace Maglio

SHE is heading south and is now in South Sumatra.

SEC has moved even further north and is within the Tonle Sap Lake Biosphere Reserve.

SEP seems to have headed back north in Sri Lanka.

And still no signals at all from SUN (since 6 August).

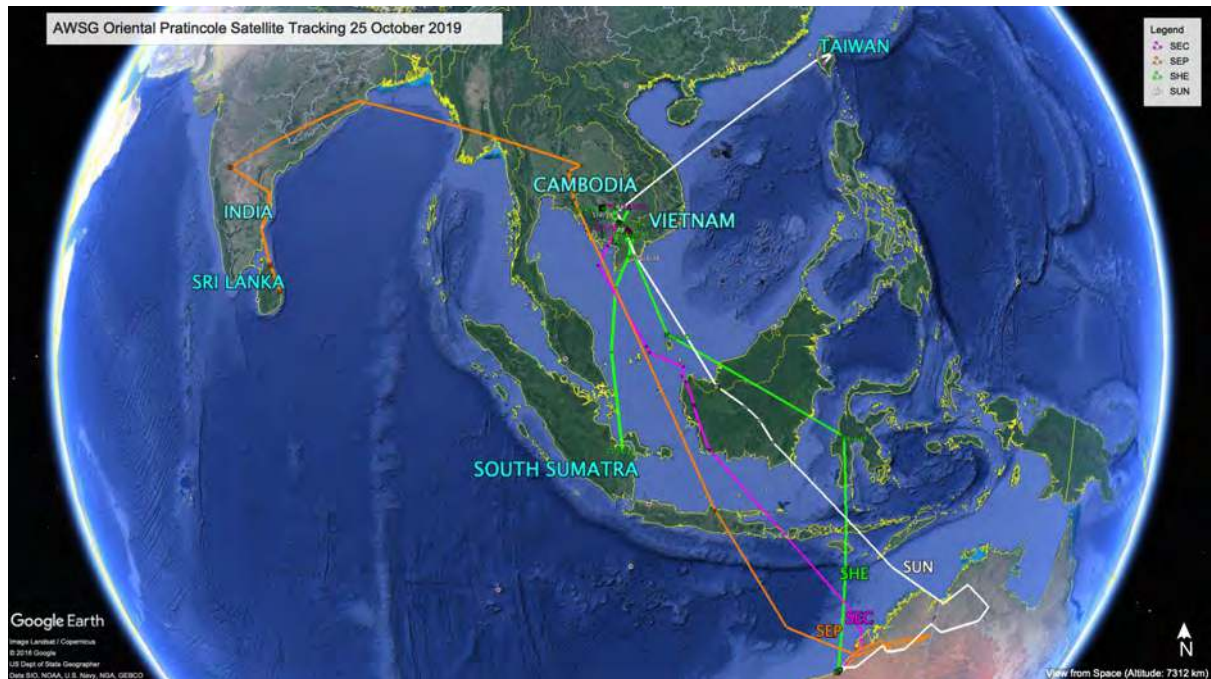


Figure 1 – Tracks of Oriental Pratincole 25/10/19

SHE (PTT 83595) – Homeward Bound!?

Since the last report, SHE has travelled 1500km south and is now approximately 50km north-east of Palembang, the capital of South Sumatra.

South Sumatra has a population of 8.4 million with mining, agriculture and various manufacturing and processing industries driving the economy of this region.

At the time of this report SHE is 1700km from its original breeding ground by the Tonle Sap Lake and 2500km from its Anna Plains release site.



Figure 2 – SHE 25/10/19 South Sumatra stopover during southward migration.

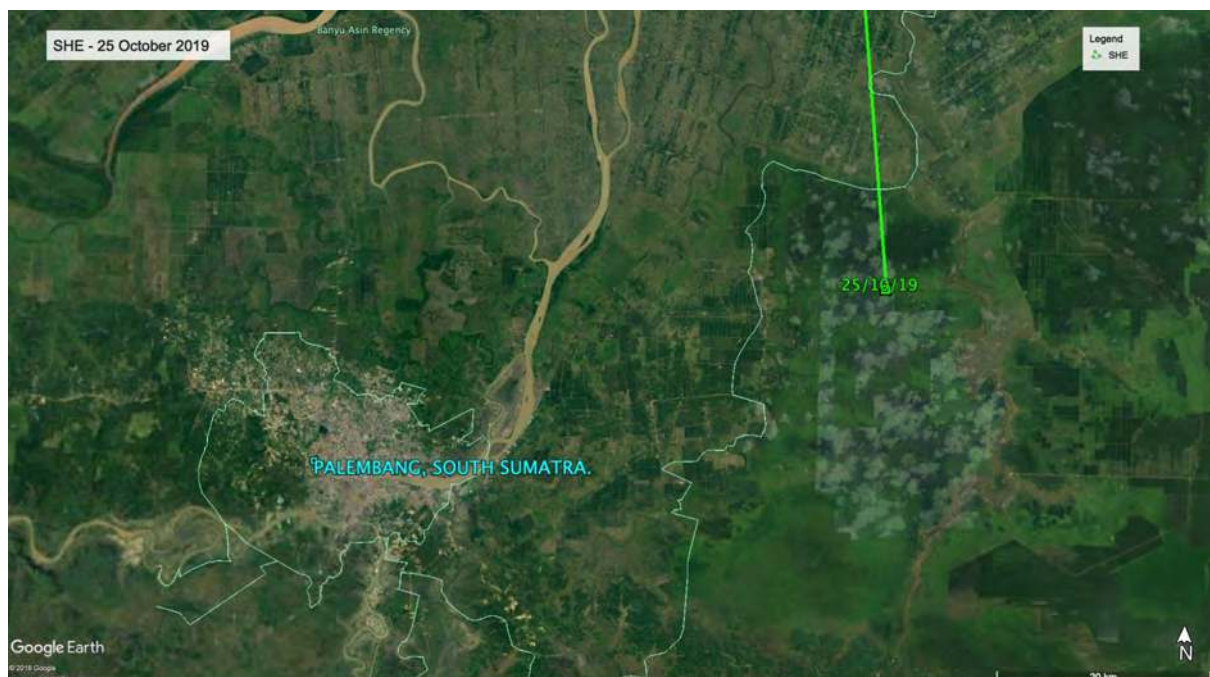


Figure 3 – SHE 25/10/19 – 50km north east of Palembang, South Sumatra

SEC (PTT 83596) – Tonle Sap Lake Visit.

In contrast to SHE, SEC has headed north again and is now within the Tonle Sap Lake Biosphere Reserve.

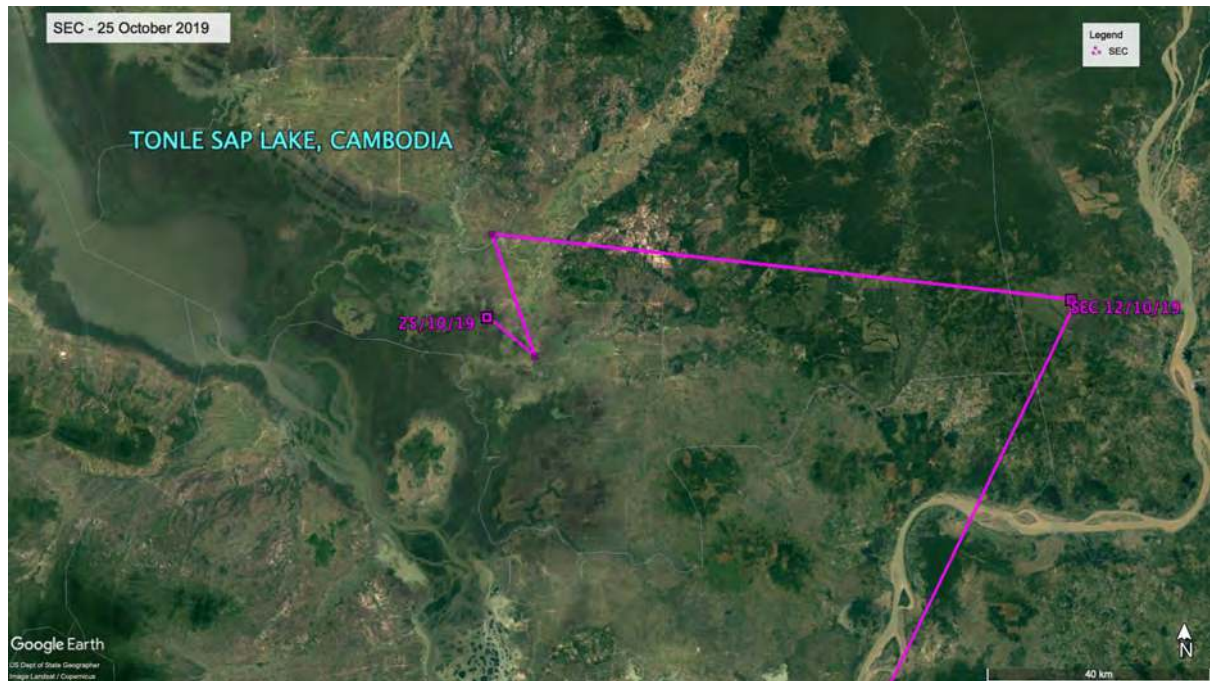


Figure 4 – SEC 25/10/19 – Tonle Sap Lake Biosphere Reserve, Cambodia.

SEP (PTT 83593) – Little to report.
By Grace Maglio and Subbu Subramanya

Data continues to be scarce for SEP with the last transmission being on the 15th October near Vattappala in the Mullaitivu District, Sri Lanka.

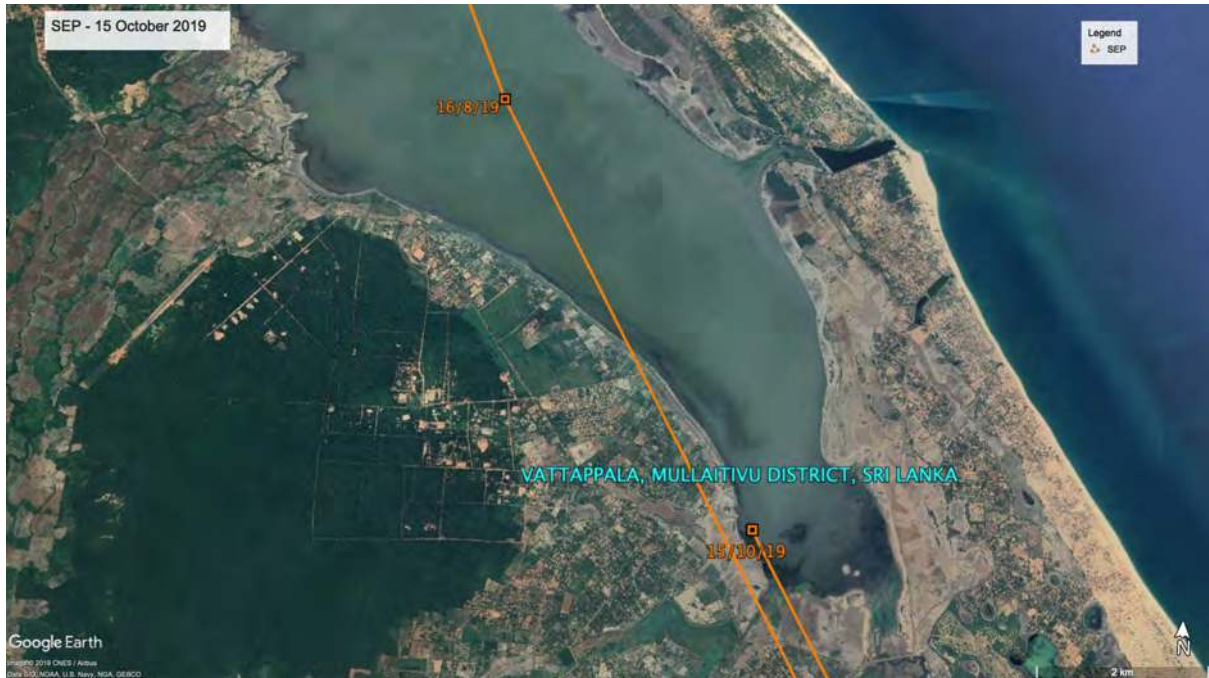


Figure 5 – SEP 25/10/19 – Vattappala, Sri Lanka.

SUN (PTT 83591) – Almost given up!
By Grace Maglio and Chung-Yu Chiang

No signals at all from SUN since the 1st September. There is still a slim possibility that signals may return during southward migration.



Figure 5 - SUN – Still no accurate readings. Pinned area marks probable location from last reading (low accuracy) 1/9/19.