

**ORIENTAL PRATINCOLE**  
**REPORT NO. 18**  
**18/9/19**  
**Grace Maglio**

SHE crosses the border into Vietnam.

SEC has headed north back to Prey Veng Province.

SEP seems to still be in Sri Lanka but there has been very little location data.

Unfortunately, there have been no signals at all from SUN (since 6 August).

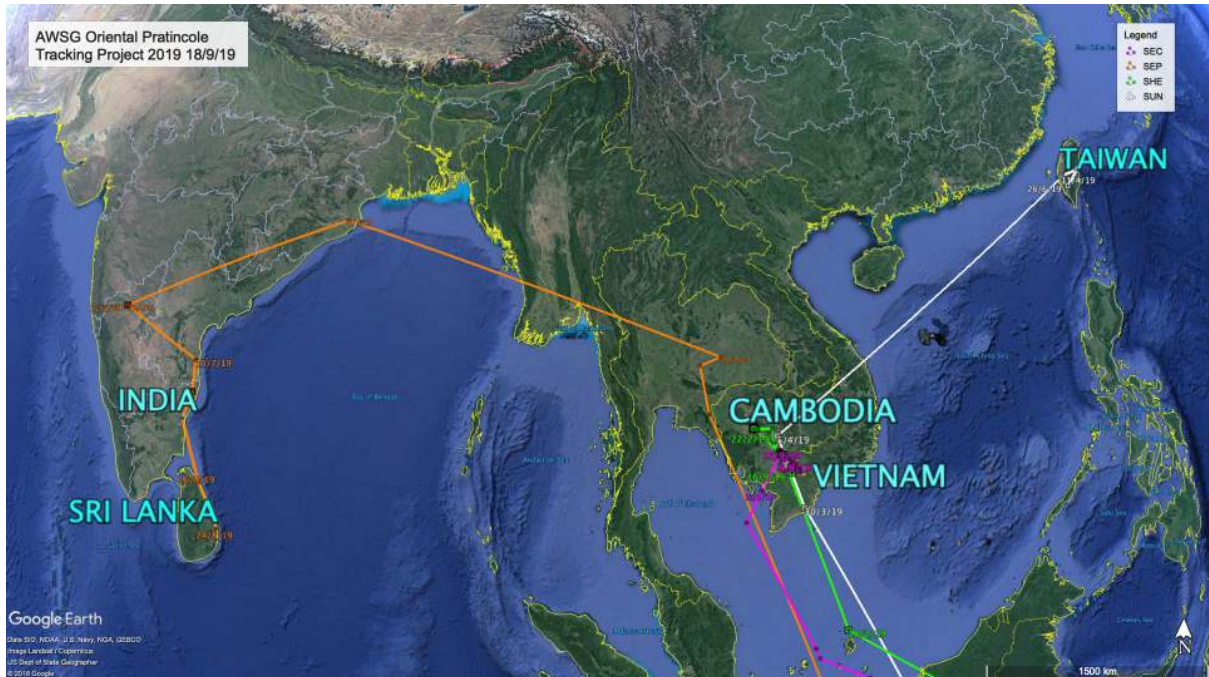


Figure 1 – Tracks of Oriental Pratincole 18/9/19

Migration details/facts so far - 24/8/19

Bird ID	Distance from 80 Mile Beach release location to breeding grounds (approx.)	Approximate time in breeding location (days)	Breeding Location	Distance from First breeding site. 10/8/19	NOTES ON SOUTHWARDS MOVEMENTS
SUN	4800km	66 total	East Taiwan	130km south west	No new location data since 6/8/19
SEP	6350km	88 total	South-west India	1190km south east	No new accurate location data since 24/8/19
SHE	3750km	97 total	West Cambodia	260km south east	Approx. 106 days at Prey Veng Province site. Currently in north west Vietnam.
SEC	3840km	70 total	South-east Cambodia	33km south	Approx 103 days at Svay Rieng Province. Has moved north to Prey Veng Province

## SHE (PTT 83595) – End of Second Breeding Attempt!

After approximately 106 days SHE has left what appears to be its second breeding location and is now in Vietnam. SHE is currently in the Mekong Delta Region, 5km north of Tang Hung Commune in Long An Province. As expected, an agricultural area of predominately rice fields.

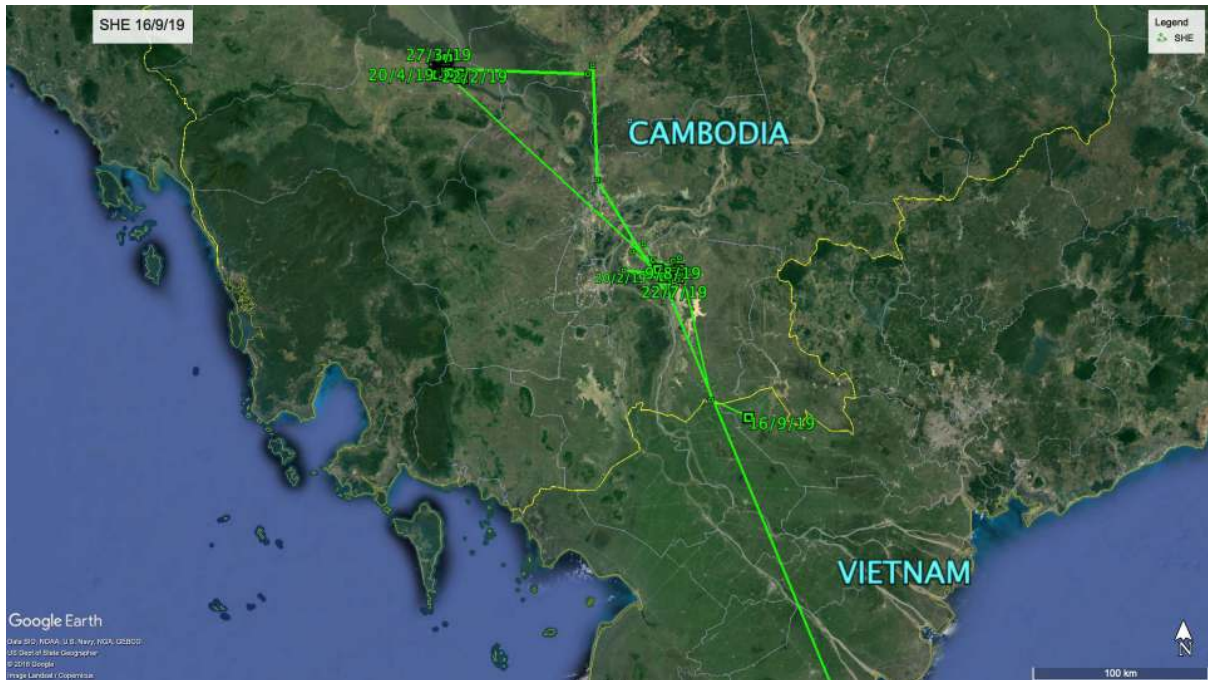


Figure 2 – SHE 16/9/19 –Tracks from high accuracy location data - Vietnam.



Figure 3 – SHE 16/9/19 – Long An Province



## SEC (PTT 83596) – Back in Prey Veng Province.

After approximately 103 days in Svay Rieng Province, SEC has flown approximately 50km north and is located in Prey Veng Province once again. It is difficult to determine whether a second breeding attempt may have occurred from the data received.

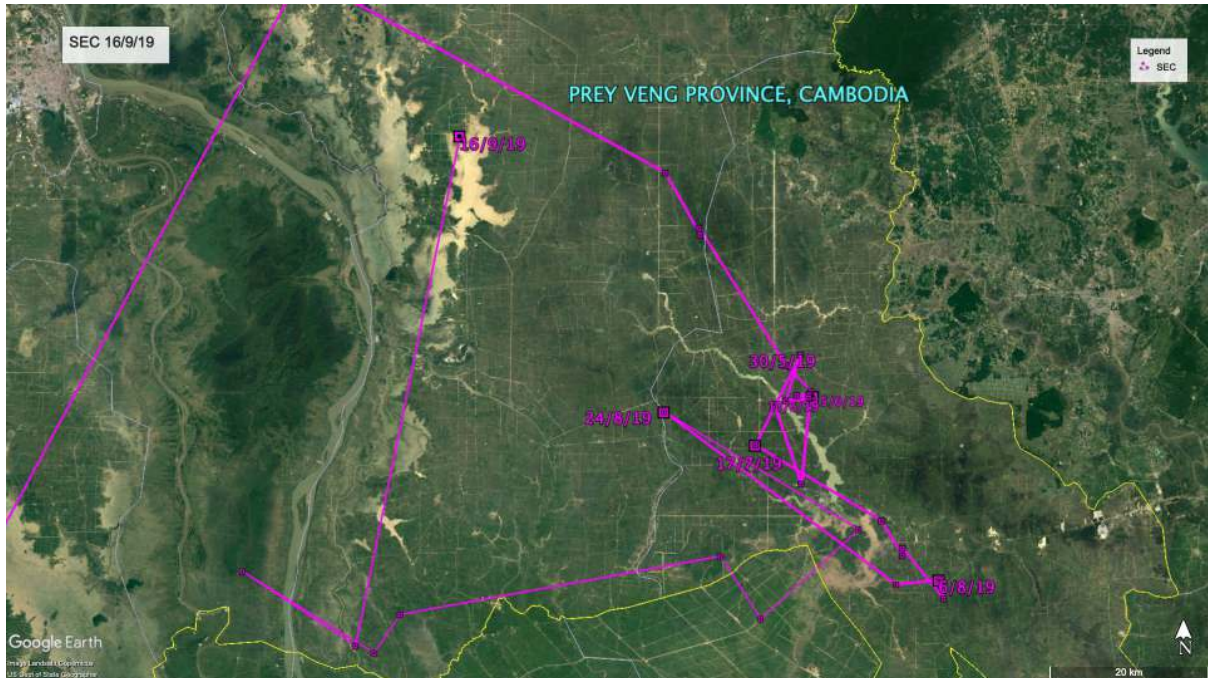


Figure 4 – SEC 16/9/19 – Prey Veng Province, Cambodia.

**SUN (PTT 83591) – Positive Thinking!**  
By Grace Maglio and Chung-Yu Chiang

We have had some location data of low accuracy with the last reading occurring on the 1st September. Location data has been poor ever since SUN reached Taiwan, so there may still be hope that a regular flow of data will occur on southward migration once SUN leaves Taiwan.



Figure 5 - SUN – Still no accurate readings. Pinned area marks probable location from last reading (low accuracy) 1/9/19.

## SEP (PTT 83593) – Waiting for Data.

By Grace Maglio and Subbu Subramanya

There has been very little location data since the 24th August. At the moment there is a chance that SEP remains in the Batticaloa District, (in the Eastern Province) of Sri Lanka.

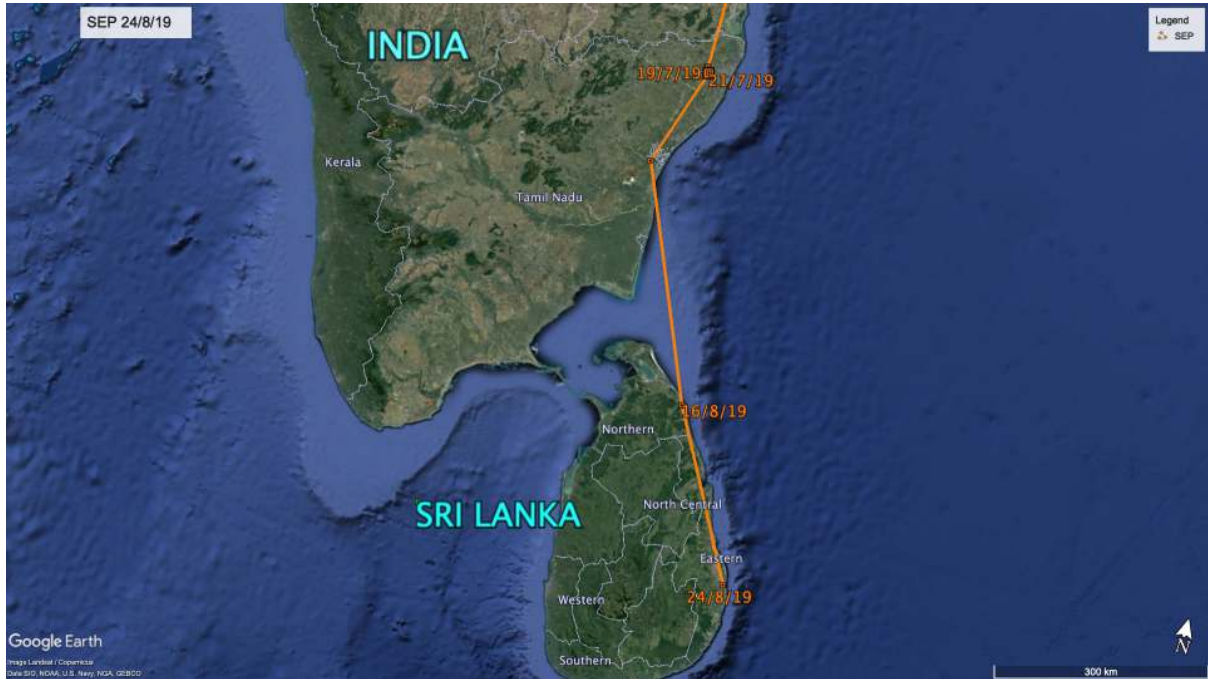


Figure 6 –SEP no accurate readings since 24/8/19.